

# James Hope Business School

*Transforming Professionals into Industry Leaders*

## Executive Education Program Brochure

Empower Your Potential | Advance Your  
Career | Drive Innovation

*with*

Globally Recognized Certificates | Hybrid  
Learning | Expert Faculty









# About James Hope University

---

James Hope University is a postgraduate institution dedicated to advancing leadership, innovation, and industry impact through world-class education, located in Lekki, Lagos. Our programs are designed to equip professionals and aspiring leaders with the knowledge, skills, and networks needed to excel in an increasingly complex and competitive global environment.

With a focus on rigorous academic research and practical application, James Hope University fosters a dynamic learning environment led by distinguished faculty and supported by cutting-edge facilities. We are committed to developing professionals who can drive meaningful change and contribute to sustainable growth across industries and sectors.

## Mission Statement:

---



The mission of James Hope University is to educate and inspire men and women to excel in every aspect of life, and to exert lasting positive impacts on the world.

## Vision Statement:

---



James Hope University aspires to endow generations of graduates with top-notch transformative education, to enable innovations and discoveries, propel the knowledge economy, and shape a better world.

# About Our Executive Education Programs

Our Executive Education programs at James Hope University are designed for business professionals, industry leaders, and entrepreneurs seeking to enhance their expertise, broaden their networks, and gain practical knowledge that can be applied immediately.

These courses are developed in collaboration with industry experts and delivered by faculty with global experience. With hybrid delivery options, students can participate both in-person on our state-of-the-art campus or join live sessions remotely, ensuring a flexible learning experience.

Participants will leave with globally recognized certificates, valuable industry connections, and insights to navigate emerging trends and challenges.

Our programs align with international best practices and are ideal for organizations looking to upskill their teams, with up to 10% discounts available for corporate group enrollments.



# Calendar of Executive Programs

**Note:** Prices and dates are subject to change without prior notice. Participants will be duly notified of any changes, including adjustments to the delivery mode.

## 1. Finance

| COURSE TITLE                                                          | DURATION | DATE               | FEE       | DELIVERY MODE |
|-----------------------------------------------------------------------|----------|--------------------|-----------|---------------|
| Financial Regulations and Compliance                                  | 3 Days   | Feb. 11 – 13, 2025 | ₦375,000  | In-Person     |
| Financial Management for the Non-Finance Expert                       | 2 Days   | Mar. 18 – 19, 2025 | ₦350,000  | In-Person     |
| Financing and Managing the Blue Economy                               | 2 Days   | March 5 - 6, 2025  | ₦275,500  | In-Person     |
| Financial Technology and Analytics                                    | 3 Days   | April 2 – 4, 2025  | ₦575,500. | In-Person     |
| Collective Investment Scheme (CIS) and Mutual Funds Management        | 3 Days   | May 6 – 8, 2025    | ₦350,000  | In-Person     |
| Portfolio Management and Assets and Liabilities Management (ALM)      | 3 Days   | July 2 – 5, 2025   | ₦350,000  | In-Person     |
| Personal Financial Management and Maximizing Investment Opportunities | 3 Days   | Oct. 14 – 16, 2025 | ₦325,000  | In-Person     |

## 2. Leadership, Management, and Strategy

| COURSE TITLE                                         | DURATION | DATE              | FEE      | DELIVERY MODE |
|------------------------------------------------------|----------|-------------------|----------|---------------|
| Sustainable Business Practice Model                  | 2 Days   | Feb 18 – 19, 2025 | ₦350,000 | In-Person     |
| Leading during Disruption and Economic Uncertainties | 2 Days   | Feb 25 – 26, 2025 | ₦429,999 | In-Person     |

| COURSE TITLE                                        | DURATION | DATE                          | FEE        | DELIVERY MODE |
|-----------------------------------------------------|----------|-------------------------------|------------|---------------|
| Scenario Planning                                   | 2 Days   | Feb. 27 – 28, 2025            | ₦449,999   | In-Person     |
| Leading the Generation Z                            | 2 Days   | Mar 11 – 12, 2025             | ₦395,550   | In-Person     |
| Ethics & Values in Public and Private Organisations | 2 Days   | Mar 12 – 13, 2025             | ₦429,999   | In-Person     |
| Breaking the Leadership Code                        | 3 Days   | May 6 – 9, 2025               | ₦550,000   | In-Person     |
| Successful Management for Business Growth           | 2 Days   | May 20 – 21, 2025             | ₦449,999   | In-Person     |
| Character-centered Leadership                       | 2 Days   | July 8 – 9, 2025              | ₦375,550   | In-Person     |
| Leadership Workshop for Senior Managers             | 2 Days   | July 9 – 10, 2025             | ₦495,550   | In-Person     |
| SME Management and Funding Strategies               | 2 Days   | July 9 – 11, 2025             | ₦325,000   | In-Person     |
| Leadership Mastermind                               | 12 Weeks | Weekly till September 8, 2025 | ₦1,500,000 | Virtual (TBC) |
| Spanning Strategy into Action                       | 2 Days   | Aug 5 – 9, 2025               | ₦429,000   | In-Person     |
| Character-centered Leadership                       | 2 Days   | Sept 10 – 11, 2025            | ₦485,000   | In-Person     |
| Leading Beyond Limitations                          | 5 Days   | Sept 22 – 26, 2025            | ₦850,000   | In-Person     |
| Authentic and Vantage Point Leadership              | 3 Days   | Oct 7 – 9, 2025               | ₦750,550   | In-Person     |

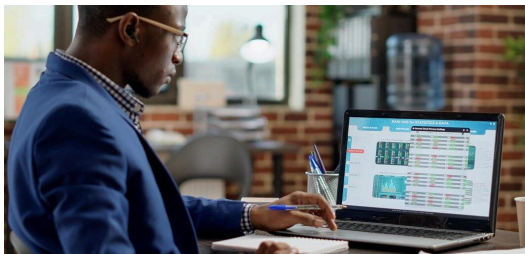
### 3. Marketing

| COURSE TITLE                                                                                   | DURATION | DATE                                           | FEE      | DELIVERY MODE |
|------------------------------------------------------------------------------------------------|----------|------------------------------------------------|----------|---------------|
| Understanding the Contemporary Nigerian Market: The Connection between Marketers and Consumers | 2 Days   | Feb 27 – 28, 2025<br>and<br>July 15 – 16, 2025 | ₦429,000 | In-Person     |



## 4. Sustainability and Risk Management

| COURSE TITLE                                                            | DURATION | DATE                | FEE        | DELIVERY MODE |
|-------------------------------------------------------------------------|----------|---------------------|------------|---------------|
| Certified Enterprise Risk Management (ERM)                              | 3 Days   | April 2 – 4, 2025   | ₦959,256   | In-Person     |
| Certified Governance, Risk Management and Compliance (GRC)              | 3 Days   | April 15 – 16, 2025 | ₦799,380   | In-Person     |
| Certified Energy Risk Management                                        | 3 Days   | May 7 – 10, 2025    | ₦1,548,000 | In-Person     |
| Risk Management and Business Continuity                                 | 2 Days   | May 13 – 14, 2025   | ₦475,000   | In-Person     |
| Certified Compliance Professional                                       | 4 Days   | May 27 – 29, 2025   | ₦1,279,008 | In-Person     |
| ESG and Sustainability Masterclass                                      | 3 Days   | June 3 – 5, 2025    | ₦959,256   | In-Person     |
| Ethics & Compliance Executive Program                                   | 3 Days   | June 23 – 25, 2025  | ₦959,256   | In-Person     |
| Unlocking the power of AI for business success                          | 2 Days   | July 9 – 10, 2025   | ₦1,427,600 | In-Person     |
| Certified Governance, Risk Management and Compliance (GRC) Professional | 3 Days   | July 22 – 24, 2025  | ₦799,380   | In-Person     |
| Ethics and Compliance Executive Programme                               | 3 Days   | Oct 21 – 23, 2025   | ₦959,256   | In-Person     |



**Program Information**

# Finance

---

World-Class Short Courses & Executive Programs



**Finance**

---

# **Collective Investment Scheme & Mutual Funds Mgmt**

---

**Course Fee: ₦375,000**

## **Course Description:**

Mutual Funds Management and CIS aims to educate Asset Management firms, Portfolio and Investment Managers on how to set up and also optimize their Mutual Funds Scheme, and strategies to bring about how to run a mutual fund profitably for the Asset Management firm. A Mutual Fund is a type of investment product whose risk can be very low in nature in most cases as it leverages the expertise of the portfolio manager and the law of large numbers that comes.

This course explores the concept of Mutual Funds and understanding that it is a unitized scheme, understanding the types of mutual funds, strategies on how to kick start the fund and grow the form, and understanding the parties to the fund and their roles.

---

**Date:**

**February 11 – 13, 2025**

---

**Duration:**

**3 Days**

**Course Fee:**

**₦375,000**

---

## Finance

---

# Personal Financial Management and Maximizing Investment Opportunities

---

**Course Fee: ₦350,000**

## Course Description:

This course provides practical insights into managing personal finances and leveraging investment opportunities for long-term wealth creation. Participants will develop budgeting skills, investment strategies, and a framework for financial planning.

---

Date:

**March 4 – 5, 2025**

---

Duration:

**2 Days**

Course Fee:

**₦350,000**

---

Personal Financial Management and Maximizing Investment Opportunities aims to educate people generally on financial literacy and getting the best of investment opportunities.

---



**Finance**

---

# **Financing and Managing the Blue Economy**

---

**Course Fee: ₦275,500**

## **Course Description:**

This course focuses on sustainable economic activities related to oceans and coastal areas. It explores the financial aspects, management strategies, and sustainability principles of activities such as fisheries, aquaculture, tourism, and marine conservation. It explores the concept of the blue economy and its sustainable development, emphasizing financial strategies, management practices, and policy frameworks for responsible utilization of ocean and coastal resources.

---

**Date:**

**March 5 – 6, 2025**

---

**Duration:**

**2 Days**

**Course Fee:**

**₦275,500**

---

**Finance**

---

# Portfolio Management and Assets and Liabilities Management (ALM)

---

**Course Fee: ₦350,000**

## Course Description:

This course focuses on effective portfolio management techniques and balancing assets and liabilities to maximize financial performance. Participants will learn to manage investment risks, optimize returns, and ensure institutional financial stability through expert-led discussions and practical simulations.

---

**Date:****March 18 – 19, 2025****Duration:****2 Days****Course Fee:****₦350,000**

---

Portfolio Management and ALM aim to educate Asset, Treasury, Portfolio, and Investment Managers on how to optimize Portfolio Management strategies to bring about good returns for the firm. Assets and Liabilities Management (ALM) is a financial strategy used by banks and other financial institutions to effectively manage their assets (loans, investments, etc.) and liabilities (deposits, borrowings, etc.). The primary goal of ALM is to ensure that the institution's assets and liabilities are properly matched in terms of maturities, interest rates, and other risk factors. This helps to mitigate risks arising from changes in interest rates, liquidity, and market conditions. ALM and Portfolio Management involves analyzing, planning, and executing strategies to optimize the balance between the institution's revenue generation and risk management.

---



**Finance**

---

# **Financial Management for Non-Finance Expert**

---

**Course Fee: ₦275,000**

## **Course Description:**

This course introduces non-finance professionals to essential financial principles and tools to help them make informed financial decisions in both personal and organisational settings. Participants will learn how to interpret financial statements, manage budgets, and assess investment opportunities.

---

**Date:**

**March 19 – 20, 2025**

---

**Duration:**

**2 Days**

**Course Fee:**

**₦275,000**

---

**Finance**

---

# Financial Technology and Analytics

---

**Course Fee: ₦575,500**

## Course Description:

This course explores the intersection of finance, technology, and data analytics. It covers topics related to financial innovations, digital finance, and data-driven decision-making in the financial industry. It delves into the rapidly evolving landscape of financial technology (FinTech) and how data analytics is transforming the financial industry. Participants will gain insights into the latest FinTech innovations, data-driven financial decision-making, and the impact on traditional finance.

---

**Date:**

**April 2 – 4, 2025**

---

**Duration:**

**3 Days**

**Course Fee:**

**₦575,500**

---

**Finance**

---

# **Collective Investment Scheme (CIS) and Mutual Funds Management**

---

**Course Fee: ₦350,000**

## **Course Description:**

Mutual Funds Management and CIS aims to educate Asset Management firms, Portfolio and Investment Managers on how to set up and also optimize their Mutual Funds Scheme, and strategies to bring about how to run a mutual fund profitably for the Asset Management firm. A Mutual Fund is a type of investment product whose risk can be very low in nature in most cases as it leverages the expertise of the portfolio manager and the law of large numbers that comes.

This course explores the concept of Mutual Funds and understanding that it is a unitized scheme, understanding the types of mutual funds, strategies on how to kick start the fund and grow the form, and understanding the parties to the fund and their roles.

---

**Date:**

**May 6 – 8, 2025**

---

**Duration:**

**3 Days**

**Course Fee:**

**₦350,000**

---



## Finance

# Financial Regulations and Compliance

Course Fee: **¥375,000**

## Course Description:

This three-day course provides a thorough overview of financial regulatory frameworks and compliance practices. Participants will explore emerging trends in financial regulations and compliance risks while developing strategies to ensure their organizations align with local and global standards. Real-life case studies and expert insights will help attendees build an effective compliance culture and mitigate potential risks.

Date:

**October 30 – November 1, 2025**

Duration:

**3 Days**

Course Fee:

**¥375,000**

## Program Information

# Leadership, Management, and Strategy

---

World-Class Short Courses & Executive Programs

# Scenario Planning

Course Fee: ₦449,999

## Course Description:

This course equips participants with tools to develop forward-thinking strategies through scenario planning. Attendees will learn how to analyze uncertainties and align their business strategies with future scenarios to stay resilient.

Date:

**February 27 - 28, 2025**

Duration:      Course Fee:

**2 Days      ₦449,999**

We live in volatile, uncertain, complex, and ambiguous times, as successful leaders need to prepare in advance for any possible scenario by adopting strategies that will allow them to win in the global competitive marketplace.



Leadership, Management, and Strategy

---

# Leading during Disruption and Economic Uncertainties

---

Course Fee: ₦429,999

Date:

**February 25 – 26, 2025**

---

Duration:

Course Fee:

**2 Days**

**₦429,000**

---

## Course Description:

According to Donald McGannon, “Leadership is action, not position.” Leadership attracts universal attention because it is all around us. The essence is service, meeting needs, and solving problems. The ultimate test of leadership is the ability to initiate and create change. Leadership is a process whereby an individual influences a group of individuals to achieve a common goal. Managers are appointed by other people. Leaders appoint themselves. Therefore, deciding to be a leader is a choice we have to make on our own. Leadership involves influence. It is concerned with how a leader affects followers. Influence remains the sine qua non of leadership, without influence, leadership does not exist. Leadership emerges in the following approaches, theories, and contexts:

---

Leadership, Management, and Strategy

---

# Breaking the Leadership Code

---

Course Fee: **¥395,550**

## Course Description:

This intensive two-day program is designed to equip participants with the core principles, tools, and strategies to unlock their leadership potential. It explores the psychological, emotional, and behavioral factors that drive effective leadership in today's complex and fast-changing business environment. Through practical exercises, case studies, and self-reflective activities, participants will break through personal and organizational leadership barriers to become transformative leaders. This course helps individuals build emotional intelligence, foster high-performing teams, and create sustainable impact.

---

Date:

**March 11 – 12, 2025**

---

Duration:

**2 Days**

Course Fee:

**¥395,550**

---

Leadership, Management, and Strategy

---

# Leading the Generation Z

---

Course Fee: ₦395,550

## Course Description:

As Generation Z (born between 1997 and 2012) enters the workforce in increasing numbers, organizations are faced with the challenge of adapting leadership strategies to engage, inspire, and manage this digitally native, purpose-driven, and socially conscious generation. This two-day immersive course equips participants with the insights and skills necessary to understand Gen Z's values, communication preferences, and expectations to lead them effectively and foster high performance.

Participants will explore best practices for motivating, mentoring, and retaining Gen Z employees while cultivating a work environment that aligns with their need for flexibility, diversity, inclusion, and growth opportunities. This course also emphasizes the importance of aligning leadership approaches with emerging trends such as remote work, mental health awareness, and environmental sustainability, which are critical to Gen Z.

---

Date:

**March 11 – 12, 2025**

---

Duration:

**2 Days**

Course Fee:

**₦395,550**

---



Leadership, Management, and Strategy

---

# Ethics & Values in Public and Private Organisations

---

Course Fee: #429,999

## Course Description:

Ethics are moral principles that govern a person's behaviour or the conducting of an activity. It has to do with what your feelings tell you about what is right or wrong. Equally, it is the standard of behaviour that our society accepts. It also represents the study of morality, good, bad, right, wrong, human conduct, and behaviour in a moral sense, and moral values. Ethics is the heart of leadership where its basis is the principles of right conduct called morals. Ethics is all about the assessment and evaluation of values because all of life is value-laden.

---

Date:

**March 12 - 13, 2025**

---

Duration:      Course Fee:

**2 Days      #429,999**

---

Leadership, Management, and Strategy

---

# Character-Centered Leadership

---

Course Fee: ₦395,000

## Course Description:

This program aims to educate business owners on the principles of sustainability and how they can be integrated into various aspects of business operations. Below is a course outline for a Sustainable Business Practices model:

---

Date:

**March 27 – 28, 2025**

---

Duration:

**2 Days**

Course Fee:

**₦395,000**

**Leadership, Management, and Strategy**

---

# **Sustainable Business Practices Model**

---

**Course Fee: Check our website for details**

## **Course Description:**

This program aims to educate business owners on the principles of sustainability and how they can be integrated into various aspects of business operations. Below is a course outline for a Sustainable Business Practices model:

---

**Date:**

**Check our website for details**

---

**Duration:**

**2 Days**

**Course Fee:**

**Check our website for details**

---

Sustainable Business Practice Model aims to educate business owners on the principles of sustainability and how they can be integrated into various aspects of business operations. Below is a course outline for a Sustainable Business Practices model: that explores the concept of sustainability and its application in the business context, focusing on environmental, social, and economic dimensions. Students will learn how to develop and implement sustainable strategies in organizations.

---



**Leadership, Management, and Strategy**

---

# Successful Management for Business Growth

---

**Course Fee: ₦449,999**

Successful management for business growth aims to educate business owners on how to manage their business successfully in the midst of a turbulent and unstable business environment and also to educate prospective business owners on how to establish, manage, and sustain a business in the midst of stiff competition and current business environment. It will also help professionals interested in managing or running an organization. The outlines of the course are stated below:

---

| Date:                    | Duration:     | Course Fee:     |
|--------------------------|---------------|-----------------|
| <b>May 20 – 21, 2025</b> | <b>2 Days</b> | <b>₦449,999</b> |

---

## Course Description:

In today's dynamic and competitive business landscape, successful management is the cornerstone of achieving sustainable growth and prosperity. The "Successful Management for Business Growth" course is designed to equip both new and experienced managers with the knowledge and skills necessary to lead their organizations to new heights. This comprehensive course will cover essential management principles, strategies, and best practices that are vital for fostering business growth in a rapidly changing world.

Leadership, Management, and Strategy

---

# Leadership Workshop for Senior Managers

---

Course Fee: ₦495,550

The workshop delivery approach will be highly interactive, relying heavily on executive business cases. Participants will find themselves applying strategic and analytical thinking skills to make ground-breaking decisions on leadership and business aligned solutions making and analytical thinking throughout the five-day period.

---

Date:

**July 9 – 10, 2025**

---

Duration:

**2 Days**

Course Fee:

**₦495,550**

**Leadership, Management, and Strategy**

---

# **SME Management and Funding Strategies**

---

**Course Fee: ₦325,000**

SME Management and Funding Strategies aims to educate people generally because successfully managing an SME requires a combination of strategic planning, effective resource utilization, and creative funding approaches. By implementing these strategies, SMEs can navigate challenges, foster growth, and thrive in a competitive business landscape.

---

**Date:**

**July 9 – 11, 2025**

---

**Duration:**

**Course Fee:**

**3 Days**

**₦325,000**

---

## **Course Description:**

This course explores the SME Management Strategies, how to clearly articulate the goals and objectives of the SME to guide decision-making and operational efforts. Understanding how to optimize resource allocation by identifying key areas for investment and cost-cutting measures to enhance overall efficiency, how to Source and Manage Funds for SMEs etc.



Leadership, Management, and Strategy

---

# Spanning Strategy into Action

---

Course Fee: **¥429,000**

## Course Description:

Strategy is the long-term direction of an organization, formed by choices and actions about its resources and scope, in order to create advantageous positions relative to competitors and peers in changing environmental and stakeholder contexts.

The strategy typically involves managing people, relationships, and resources. Strategy three branches include:

- Context (Internal and External)
- Content (Strategic Options)
- Process (Formation and Implementation)

---

Date:

**August 5 – 9, 2025**

---

Duration:      Course Fee:

**2 Days      ¥429,000**

---

Leadership, Management, and Strategy

---

# Character-Centered Leadership

---

Course Fee: ₦485,000

## Course Description:

This program aims to educate business owners on the principles of sustainability and how they can be integrated into various aspects of business operations. Below is a course outline for a Sustainable Business Practices model:

---

Date:

**Sept. 10 – 11, 2025**

---

Duration:

**2 Days**

Course Fee:

**₦485,000**

Leadership, Management, and Strategy

---

# Leadership Beyond Limitations

---

Course Fee: ₦850,000

## Course Description:

This program aims to educate business owners on the principles of sustainability and how they can be integrated into various aspects of business operations. Below is a course outline for a Sustainable Business Practices model:

---

Date:

**Sept. 22 – 26, 2025**

---

Duration:

**5 Days**

Course Fee:

**₦850,000**



Leadership, Management, and Strategy

---

# Authentic and Vantage Point Leadership

---

Course Fee: ₦750,550

## Course Description:

This program aims to educate business owners on the principles of sustainability and how they can be integrated into various aspects of business operations. Below is a course outline for a Sustainable Business Practices model:

---

Date:

**Oct. 7 – 9, 2025**

---

Duration:

**3 Days**

Course Fee:

**₦750,550**

## Program Information

# Marketing

---

World-Class Short Courses & Executive Programs



**Marketing**

---

# Understanding the Contemporary Nigerian Market: The Connection between Marketers and Consumers

---

**Course Fee: ₦429,000**

## Course Description:

This course offers insights into the dynamic Nigerian market and explores innovative strategies for engaging modern consumers effectively. Participants will learn how to tailor their marketing strategies to align with evolving consumer behaviors.

---

**Date:**

**Feb. 27 – 28, 2025 & July 15 - 16, 2025**

---

**Duration:**

**2 Days**

**Course Fee:**

**₦429,000**

---



**Program Information**

# **Sustainability and Risk Management**

---

World-Class Short Courses & Executive Programs

**Sustainability and Risk Management**

---

# **Certified Governance, Risk Management & Compliance**

---

**Course Fee: ₦449,999**

In today's complex global business environment, having a transparent view of information and a coordinated approach to the governance, management, and assurance of performance, risk, and compliance is critical to success. Organizations that understand and apply the principles of integrated governance, risk management, and compliance (GRC), in both processes and technology, have a real competitive advantage.

---

**Date:**

**February 27 – 28, 2025**

---

**Duration:**

**2 Days**

**Course Fee:**

**₦449,999**

---

**Sustainability and Risk Management**

---

# Certified Enterprise Risk Management (ERM)

---

**Course Fee: ₦395,550**

## Course Description:

This course provides participants with a framework for identifying, assessing, and mitigating risks. It covers best practices in enterprise risk management, enabling participants to develop proactive strategies for managing risks in their organizations.

---

**Date:**

**Duration:**

**Course Fee:**

**March 11 – 12, 2025   3 Days   ₦395,550**

---

This Enterprise Risk Management [ERM] program is a practical hands-on training designed for executives, managers, professionals, consultants, and internal and external auditors who deal with the complexities of enterprise-wide risk management functions daily. This training program will, inter alia, feature the necessary expertise and knowledge in implementing a complete ERM process as specified in the latest thinking on the subject, how to influence and oversee a vibrant ERM, and the mechanism of resilient corporate governance & its relationship to ERM.

---



**Sustainability and Risk Management**

---

# **Risk Management and Business Continuity**

---

**Course Fee: ₦429,000**

## **Course Description:**

The course focuses on identifying, assessing, and mitigating risks to ensure the continued operation and resilience of businesses and organizations. The course provides an in-depth understanding of risk management practices and strategies for ensuring business continuity in the face of various threats and disruptions. Participants will learn to identify, assess, and mitigate risks while developing comprehensive business continuity plans.

---

**Date:**

**April 1 – 2, 2025**

---

**Duration:**

**Course Fee:**

**2 Days**

**₦429,000**

---

**Sustainability and Risk Management**

---

# **Budgeting Under Conditions of Uncertainty**

---

**Course Fee: ₦375,550**

## **Course Description:**

In a world filled with volatility and uncertainty, this course equips senior leaders and decision-makers with the tools to anticipate potential future scenarios and develop strategies to thrive in a competitive marketplace. Learn how to build, assess, and implement scenario-based strategies to fortify your organization against perceived risks and seize opportunities for long-term success.

- Understanding and building credible future scenarios
- Aligning scenarios with strategic decisions
- Risk assessment and scenario-based decision-making
- Embedding scenario thinking within your organization

---

**Date:**

**April 16 – 17, 2025**

---

**Duration:**      **Course Fee:**

**2 Days      ₦375,550**

---

Sustainability and Risk Management

---

# Certified Energy Risk Management

---

Course Fee: **¥1,548,000**

Success in today's energy sector hinges on the understanding of risk and opportunity, with data-driven management, analytics, and strategic planning becoming crucial skills for executives. Energy organisations must learn how to thrive in the face of an uncertain future, and energy leaders must rethink how to drive growth and manage risk.

This training program is fast-paced, highly interactive and participatory and will be delivered through a combination of presentations, group discussions, role-play, and group exercises. This program is rich in case studies and examples.

---

Date:

**May 7 – 10, 2025**

---

Duration:

**2 Days**

Course Fee:

**¥1,548,000**

---



**Sustainability and Risk Management**

---

# **Certified Compliance Professional**

---

**Course Fee: ₦1,279,008**

Compliance training is a vital component of any organization's operations and serves as the cornerstone for various legal and regulatory considerations of a business. By keeping employees informed and trained, organizations can ensure they are equipped with the right and ample knowledge to do their work in accordance with relevant laws and regulations.

---

**Date:**

**May 27 – 29, 2025**

---

**Duration:      Course Fee:**

**4 Days      ₦1,279,008**

Sustainability and Risk Management

---

# ESG and Sustainability Masterclass

---

Course Fee: ₦959,256

ESG and Sustainability have garnered attention in recent years, with many institutional investors investing only in those companies that provide ESG performance reporting. ESG has considerations relevant to analysts and investors, consumers, and employees, and has become a key topic of discussion at the Board table. This ESG and Sustainability Masterclass provides an overview of an ESG framework and how it supports a company's overall risk management. It also examines each component in detail and provides insight into how they converge to impact a company and its stakeholders.

---

Date:

**June 3 - 5, 2025**

---

Duration:      Course Fee:

**3 Days      ₦959,256**

---

**Sustainability and Risk Management**

---

# Unlocking the Power of AI for Business Success

---

**Course Fee: ₦1,427,600**

Are you prepared for the AI revolution reshaping industries worldwide? The “AI for Business Success” workshop at the James Hope Business School in Lagos, Nigeria is your opportunity to stay ahead of the curve. This intensive two-day program is tailored for senior-level executives, policymakers, and non-profit leaders from diverse sectors, including Government, Industrial and Consumer Goods, Technology, Media, Healthcare, Power, Financial Services, Agriculture, and Oil and gas.

---

**Date:**

**July 9 - 10, 2025**

---

**Duration:**

**Course Fee:**

**2 Days**

**₦1,427,600**

---



**Sustainability and Risk Management**

---

# **Ethics and Compliance Executive Programme**

---

**Course Fee: ₦959,256**

Ethics and Compliance are the foundations for sustainable work practices and leadership principles. They expand individual and corporate priorities far beyond traditional business aims of profit and shareholder enrichment. Ethical factors have now become significant influences on public and private sector organizations as investors and stakeholders worldwide increasingly consider the integrity of business partners.

Integrity also demands abiding by international regulations and operational transparency to ensure that business leaders follow the necessary governance requirements. The business world not only expects integrity but also needs to see integrity in action. Ethics and compliance training helps educate leaders and employees about rules, regulations, and company policies that should be followed. It imparts practical applications of the rules and their role in maintaining an organization's good reputation. This program is designed to dig deeply into the principles and practices of high-quality ethics & compliance programs.

---

**Date:**

**Oct. 21 – 23, 2025**

**Duration:**

**3 Days**

**Course Fee:**

**₦959,256**

---

## Program Information

# Master of Science (M.Sc.) Programs

---

Our Master of Science (M.Sc.) degrees are tailored for individuals seeking in-depth expertise in a specific discipline. These programs are ideal for those aiming to advance in their careers, launch a business, or pursue further research and academic opportunities.

## MSc. Finance (+ACIB)

Tuition: ~~₦~~2,500,000

Our MSc. Finance program includes a dual certificate and professional membership with the **Chartered Institute of Bankers of Nigeria (CIBN)**, enhancing your credentials and providing immediate industry recognition. You will gain advanced financial knowledge and hands-on skills to navigate today's complex financial landscape.

### Highlights:

- Dual certification (James Hope University + CIBN membership)
  - Practical exposure to financial modeling, analysis, and strategy
  - Industry connections and networking opportunities
- 

## MSc. FinTech and Analytics

Tuition: ~~₦~~3,500,000

Explore the intersection of finance and technology with our MSc. Financial Technology and Analytics. This program equips you with essential skills in fintech, big data analytics, and emerging technologies reshaping the financial sector.

### Highlights:

- Hands-on experience with fintech tools and analytics platforms
  - Focus on blockchain, AI, and data-driven financial solutions
  - Designed for professionals eager to innovate within the digital economy
-



## **MSc. Innovation, Intrapreneurship, and Entrepreneurship**

**Tuition: ₦3,500,000**

This program is perfect for aspiring entrepreneurs and intrapreneurs looking to drive innovation within startups or established organizations. You will develop critical thinking and problem-solving skills to identify opportunities and implement transformative solutions.

### **Highlights:**

- Practical entrepreneurial training and case studies
  - Guidance on launching new ventures or driving internal innovation
  - Industry mentors and startup ecosystem immersion
- 

## **MSc. Economic Development & Policy Analysis**

**Tuition: ₦2,250,000**

Our MSc. in Economic Development & Policy Analysis focuses on solving real-world economic challenges. You will gain analytical skills to design policies that drive sustainable development and economic growth.

### **Highlights:**

- Application of economic theory to development challenges
  - Emphasis on policy design, evaluation, and implementation
  - Ideal for careers in research, policymaking, and international organizations
-

## Program Information

# Master of Business Administration (MBA) Programs

---

Our MBA programs are designed to transform professionals into visionary leaders and decision-makers. Whether you are an aspiring executive, entrepreneur, or experienced manager, our MBA programs equip you with the tools to thrive in competitive business environments.

## **Executive MBA**

**Tuition: ~~¥~~9,000,000**

The Executive MBA is tailored for experienced professionals in senior management roles or entrepreneurs leading their businesses. This program emphasizes leadership development, strategy, and global business acumen.

### **Highlights:**

- Designed for senior professionals with significant work experience
  - Hybrid delivery: Combine in-person sessions with online flexibility
  - Opportunity for international immersion and executive coaching
- 

## **Full-Time MBA**

**Tuition: ~~¥~~5,000,000**

Our Full-Time MBA program is ideal for future leaders with a passion for driving innovation and organizational growth. This immersive experience covers all key areas of business, preparing you for leadership roles globally.

### **Highlights:**

- Immersive, full-time learning experience
  - Network-building opportunities with faculty, alumni, and industry leaders
  - Develop critical leadership and entrepreneurial skills
-



## MBA Flex (Part-Time MBA)

**Tuition: ₦5,000,000**

The MBA Flex (Part-Time MBA) is designed for working professionals who want to earn a world-class MBA while balancing their career and personal commitments. This flexible program enables you to apply learnings directly to your work environment.

### Highlights:

- Flexible hybrid delivery: Attend classes while working full-time
- Immediate applicability of coursework to your current job
- Ideal for professionals seeking career advancement



# How to Apply

## Individual Enrollments:

---

- Visit the application portal [portal.jhu.edu.ng](http://portal.jhu.edu.ng) and select the program of your choice.
- Complete the online application form.
- Submit the required documents.
- Await confirmation from our admissions team.

## Corporate Enrollments:

---

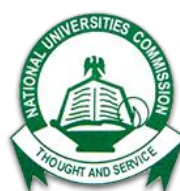
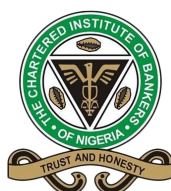
Companies enrolling three or more participants can benefit from a discount. Contact us at [executiveeducation@jhu.edu.ng](mailto:executiveeducation@jhu.edu.ng) or [enquiries@jhu.edu.ng](mailto:enquiries@jhu.edu.ng) for group registrations.

# Accreditation and Partnerships

James Hope University is accredited by the National Universities Commission (NUC) and holds membership with globally recognized bodies such as:

- Business Graduates Association (BGA)
- AACSB International
- African Association of Business Schools (AABS)
- Chartered Institute of Bankers of Nigeria (CIBN)

In partnership with the Chartered Institute of Bankers of Nigeria (CIBN), graduates from our Finance programs automatically earn associate membership status upon graduation.









# Contact Us

For more information or to discuss your options,  
feel free to reach out to our admissions team:

Website: <https://jhu.edu.ng>

Phone: +2342015150401

Email: [inquiries@jhu.edu.ng](mailto:inquiries@jhu.edu.ng)

WhatsApp: +2349016352818

Admission Portal: <https://portal.jhu.edu.ng>

Executive Education: [www.jhu.edu.ng/executive-education](http://www.jhu.edu.ng/executive-education)

Library: <https://library.jhu.edu.ng/>

---